

Score

From "From 'The'"






Kevin William Davis

In this piece, the indicated text is spoken and the given shapes are to be traced out in the manner indicated. All gestures/rhythms should be at a relaxed, speech-like pace. Parts should only stay loosely aligned.

Each bracket indicates a new section. In the first section speaker and players start every line together with pauses in between. In all subsequent sections, the speaker and percussionist begin the section together but need not stay together. The speaker cues each entrance.

The overall dynamic is quiet. This piece can be patient with substantial pauses between sections. Percussion IV/keyboard should hold down the sustain pedal for the entire piece while playing snare drum until section 11.

a	voice	voice begins	
b	IV	add shapes on keyboard with fingernails without depressing keys	
c	II	add small shapes on inside of piano case with fingernails	
d	III	add shapes on lower strings with hands	
e	I	shapes on snare drum with fingertips	
f	all	continue	

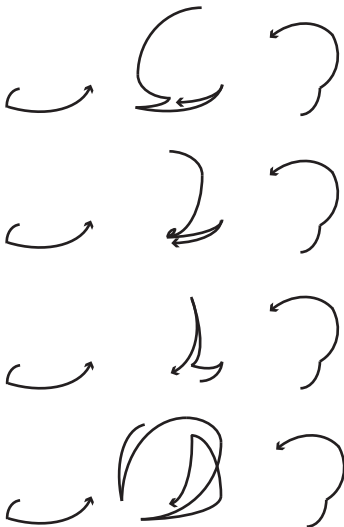
a		THE WIND BLOWS.
b		THE RAIN FALLS.
c		THE SNOW FALLS.
d		THE RIVERS FLOW.
e		THE STREAMS FLOW.
f		THE OCEANS RISE.

- I continue
- II stick on stick on soundboard of piano
- III continue
- IV continue



THE OCEANS FALL.

- I continue
- II continue
- III wire brush in middle section
- IV continue



THE BUSHES GROW.

THE MOSSES GROW.

THE FERNS GROW.

THE LICHENS GROW.

<p>I continue II continue III continue IV triangle beater in top section</p>		<p>THE TREES SWAY IN THE WIND. THE FLOWERS SWAY IN THE WIND.</p>
---	--	---

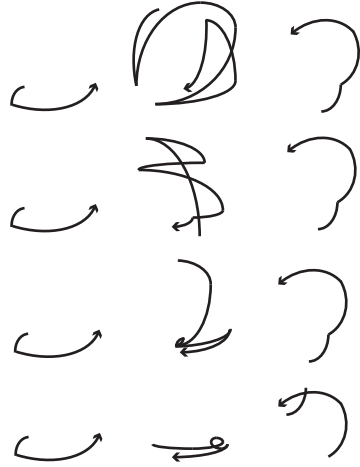
<p>I stop lower all lower strings from D1 to C3 just above the hammers (around 7th harmonic) II stop lower strings around 7th harmonic III stop lower strings around 7th harmonic IV Play indicated notes w/LH only, breaking up notes</p>	<p>THE INSECTS ARE HATCHED. THE REPTILES ARE HATCHED. THE MAMMALS ARE BORN. THE BIRDS ARE HATCHED. THE FISHES ARE HATCHED.</p>
---	--

p

<p>I tacit II tacit III tacit IV solo, normale with pedal, slowly</p>	<p>THE PEOPLE SAIL ON RAFTS.</p>
--	----------------------------------

mf

- I piano
- II stick on stick on frame; accentuate with hits for syllables ad libitum
- III wire brush in middle section w/hits for syllables
- IV triangle beater in top section w/hits for syllables

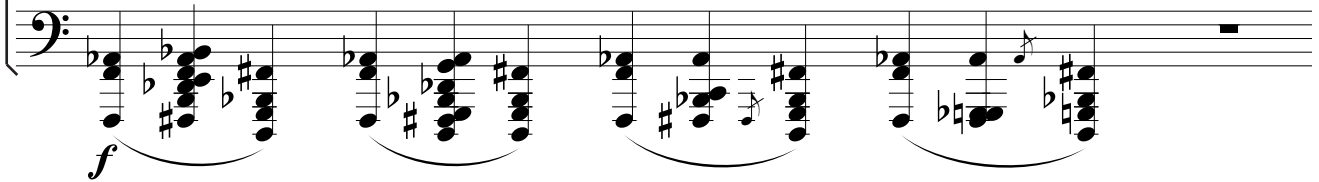


THE LICHENS GROW.

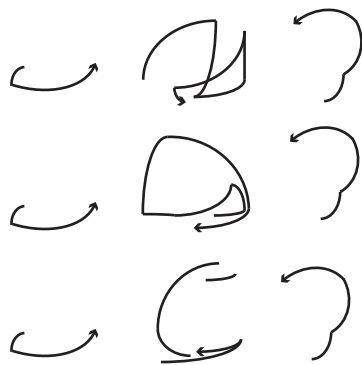
THE FLOWERS GROW.

THE MOSSES GROW.

THE TREES GROW.



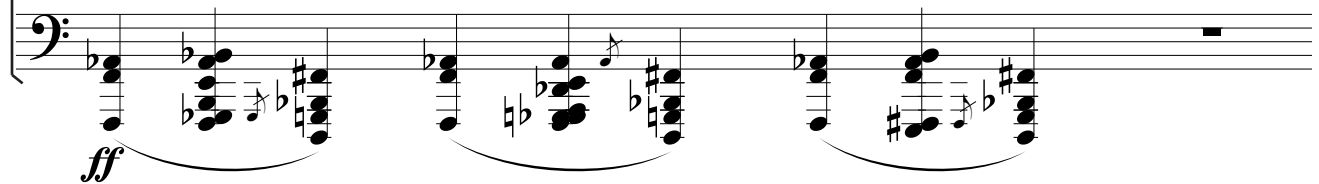
I, II, III, IV continue, louder



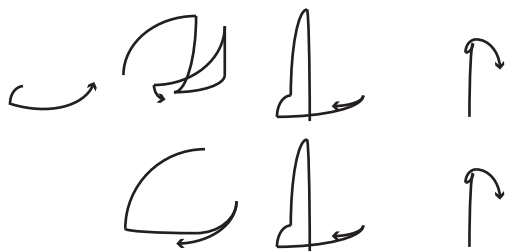
THE INSECTS GROW.

THE REPTILES GROW.

THE BUSHES GROW.

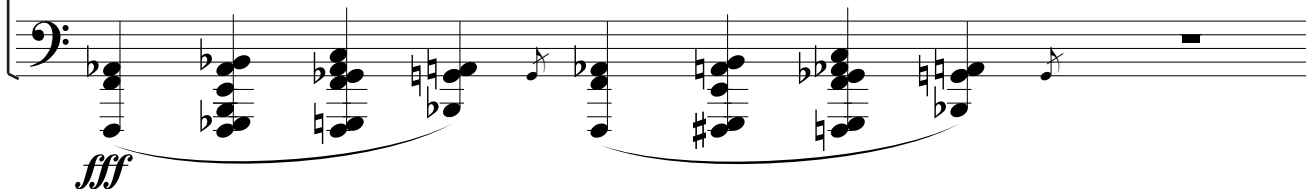


I, II, III, IV continue, even louder



THE INSECTS GATHER FOOD.

THE BIRDS GATHER FOOD.



II Solo with hands on lower strings of the piano



THE PLANETS SHINE.

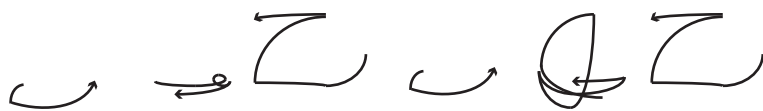
THE MOON SHINES.

THE SUN SHINES.



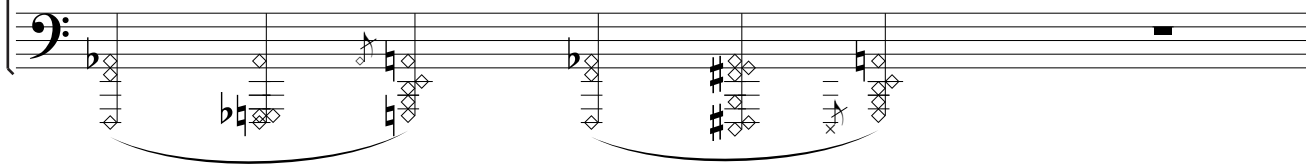
Slowly release pedal after percussion II solo

- I silently depress keys as indicated
- II quietly trace shapes with hands on lower section
- III quietly trace shapes with hands on middle section
- IV quietly trace shapes with hands on upper section



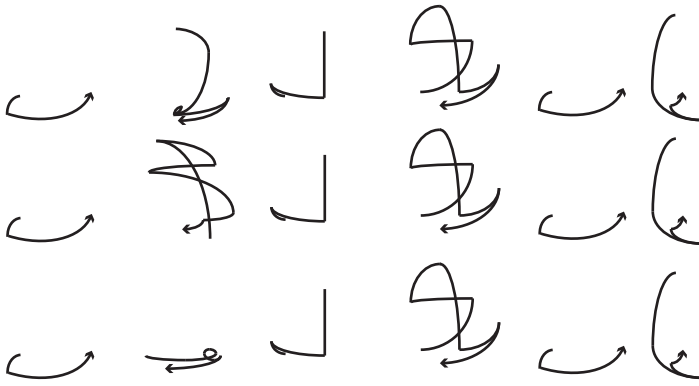
THE TREES DRINK.

THE FUNGUSES DRINK.



Silently depress keys while other percussionists play inside piano

I, II, III, IV Continue



THE MOSSES TURN
TOWARDS THE LIGHT.

THE FLOWERS TURN
TOWARDS THE LIGHT.

THE TREES TURN
TOWARDS THE LIGHT.

